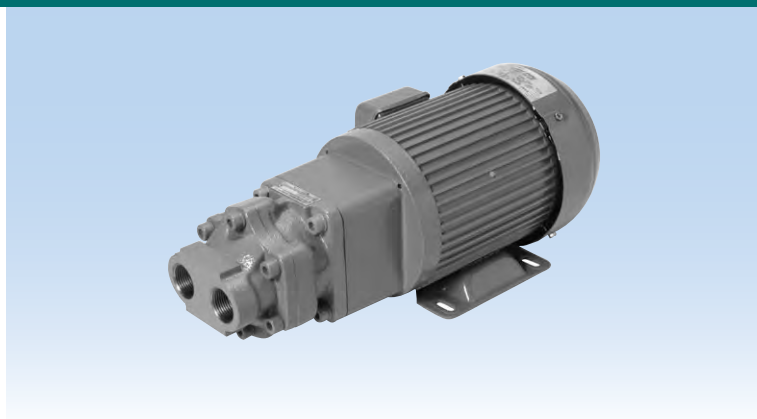
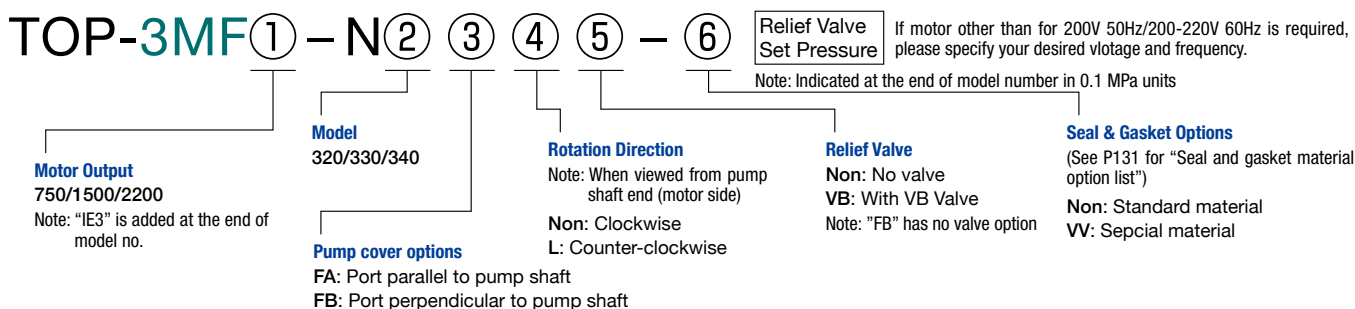


3MF

(WITH INTEGRATED 3-PHASE MOTOR)



Model Numbering System



Specifications

Note: The value "*" can not always be achieved as it is subject to individual operating conditions and specifications.

Model	Item	Motor speed 50Hz 1500min ⁻¹				Motor speed 60Hz 1800min ⁻¹			
		Theoretical discharge (ℓ/min)	Max. pressure for motor output (MPa)			Theoretical discharge (ℓ/min)	Max. pressure for motor output (MPa)		
			750W	1500W	2200W		750W	1500W	2200W
TOP-N320	FA	39.0	0.4	1.3	2.1	46.8	0.2	1.0	1.7
	FA VB								
	FB								
TOP-N330	FA	58.5	0.1	0.8	1.3	70.2	—	0.6	1.0
	FA VB								
	FB								
TOP-N340	FA	78.0	—	0.5	0.9	93.6*	—	0.3	0.6
	FA VB								
	FB								

- Test oil: ISO-VG46/Oil temperature: 40C
- TOP-N3F is the updated series of TOP-3F. It is also compatible with old series in performance and mounting dimensions.

Motor Specifications •3-phase squirrel-cage induction motor •Totally enclosed •Class F insulation •Protection level IP44

Output (W)	Number of poles (P)	Rating	200V class				400V class				Approx. Weight (Kg)
			Voltage (V)	Frequency (Hz)	Motor Speed (min ⁻¹)	Current (A)	Voltage (V)	Frequency (Hz)	Motor Speed (min ⁻¹)	Current (A)	
750	4	Cont	200	50	1440	3.3	400	50	1440	1.77	18.0
			200	60	1720	3.1	400	60	1730	1.61	
			220	60	1740	3.0	440	60	1760	1.57	
1500	4	Cont	200	50	1450	6.9	400	50	1450	3.40	24.0
			200	60	1740	6.2	400	60	1740	3.10	
			220	60	1750	6.0	440	60	1750	3.00	
2200	4	Cont	200	50	1460	10.6	400	50	1460	5.30	39.0
			200	60	1750	9.4	400	60	1750	4.70	
			220	60	1760	9.2	440	60	1760	4.60	

- Please consult us when ordering outdoor-type, increased safety-type, special voltage type or one with CE marking, terminal box attached on the other side, or other special motors.
- This series complies with requirements of IE3, CE marking and class F insulation. Note: Please consult us if motor other than for standard voltage is required.