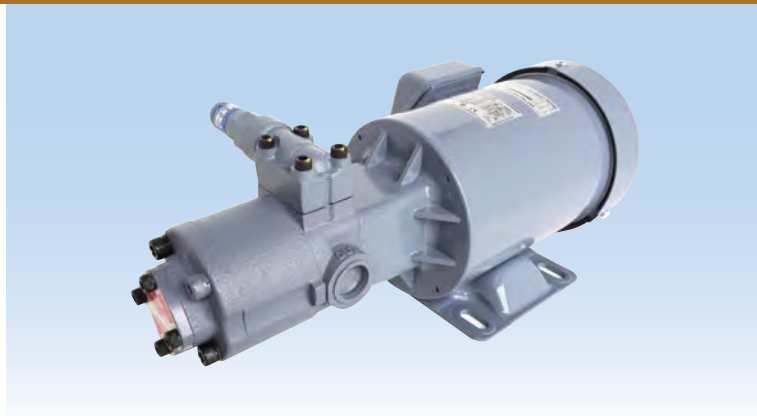


# 2MY-2HBM

(WITH INTEGRATED 3-PHASE MOTOR)



## Model Numbering System (For General Lubricant Oil)

**TOP-2MY** ① – ② **HBM** ③ ④ ⑤ – ⑥

**Relief Valve Set Pressure** If motor other than for 200V 50Hz/200-220V 60Hz is required, please specify your desired voltage and frequency.  
Note: Indicated at the end of model number in 0.1 MPa units

<p><b>Motor Output</b> 200/400/ 750/1500</p> <p>Note: "IE3" is added to the suffix of model no. if motor is larger than 750W.</p>	<p><b>Model</b> Note: Pump integrated with motor 203/204/206/208/ 210/212/216/220</p>	<p><b>Port Type</b> Non: Rc (Standard) G: G</p>	<p><b>Rotation Direction</b> Note: When viewed from pump shaft end (motor side) Non: Counter-clockwise R: Clockwise</p>	<p><b>Relief Valve</b> Non: No valve VB: With VB Valve VD: With VD Valve (External return-type)</p>	<p><b>Seal &amp; Gasket Options</b> (See P131 for "Seal and gasket material option list") Non: Standard material VV/US/UT</p>
---	---	---	---	---	---

## Specifications

Item	Theoretical discharge (ℓ/min)	Motor speed 50Hz 1500min <sup>-1</sup>				Motor speed 60Hz 1800min <sup>-1</sup>				
		Max. pressure for motor output (MPa)				Max. pressure for motor output (MPa)				
		200W	400W	750W	1500W	200W	400W	750W	1500W	
<b>TOP-203HBM</b>	4.2	1.7	3.0	3.0	3.0	5.0	1.3	3.0	3.0	3.0
<b>TOP-204HBM</b>	6.0	1.2	3.0	3.0	3.0	7.2	0.9	2.3	3.0	3.0
<b>TOP-206HBM</b>	9.0	0.7	1.8	2.5	2.5	10.8	0.5	1.4	2.5	2.5
<b>TOP-208HBM</b>	12.0	0.5	1.3	2.5	2.5	14.4	0.3	1.0	2.3	2.5
<b>TOP-210HBM</b>	15.0	0.4	1.1	2.5	2.5	18.0	0.3	0.9	2.0	2.5
<b>TOP-212HBM</b>	18.0	0.3	0.9	2.0	2.0	21.6	–	0.7	1.6	2.0
<b>TOP-216HBM</b>	24.0	0.2	0.7	1.5	1.5	28.8	–	0.5	1.2	1.5
<b>TOP-220HBM</b>	30.0	–	0.4	1.2	1.2	36.0	–	0.3	0.9	1.2

- Test oil: ISO-VG46/Oil temperature: 40C
- TOP-2HB series is the updated model of TOP-2HA series. It is compatible with the old model in mounting dimensions and performance. Only the port thread type was changed from "G" to "Rc" type.

## Motor Specifications

- 3-phase squirrel-cage induction motor
- Totally enclosed
- Class E insulation (200W, 400W)
- Class F insulation (750W, 1500W)
- Protection level IP44

Output (W)	Number of poles (P)	Rating	200V class				400V class				Approx. Weight (Kg)
			Voltage (V)	Frequency (Hz)	Motor Speed (min <sup>-1</sup> )	Current (A)	Voltage (V)	Frequency (Hz)	Motor Speed (min <sup>-1</sup> )	Current (A)	
<b>200</b>	4	Cont	200	50	1440	1.34	380	50	1440	0.64	6.5
			200	60	1720	1.12	400	50	1440	0.67	
			220	60	1730	1.17	400	60	1720	0.56	
<b>400</b>	4	Cont	200	50	1420	2.20	380	50	1420	1.08	9.0
			200	60	1710	1.93	400	50	1430	1.11	
			220	60	1730	1.95	400	60	1710	0.96	
<b>750</b>	4	Cont	200	50	1440	3.30	400	50	1440	1.77	14.0
			200	60	1720	3.10	400	60	1730	1.61	
			220	60	1740	3.00	440	60	1760	1.57	
<b>1500</b>	4	Cont	200	50	1450	6.90	400	50	1450	3.40	22.0
			200	60	1740	6.20	400	60	1740	3.10	
			220	60	1750	6.00	440	60	1750	3.00	

- Please consult us when ordering outdoor-type, increased safety-type, special voltage type or one with CE marking, terminal box attached on the other side, or other special motors.
  - 750W and 1500W motors comply with requirements of IE3, CE marking and class F insulation.
- Note: Please consult us if motor other than for standard voltage is required.

Any disassembly or alteration of the product will void the warranty.