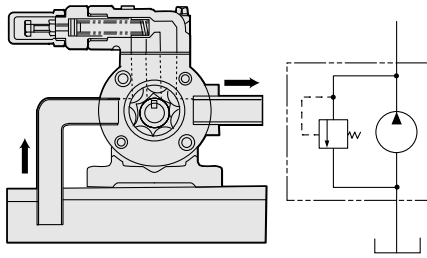


## How to install a Trochoid pump relief valve properly in a pump system

### Internal return (as a safety valve)

#### VB Type

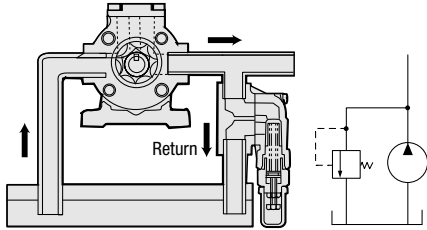


The valve is used as a safety valve to lower pressure instantly during oil transfer, which is attached to the pump directly.

If the valve is being activated constantly and/or the discharge port is being closed completely for a long time in the system, air bubbles, large noise and oil temperature increase might occur. In such a case, we recommend external return type as shown below.

### External return (as a safety valve/pressure control valve)

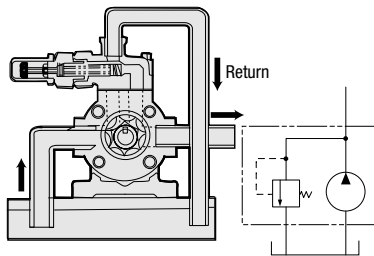
#### VBD Type



The valve is used as a pressure control valve for hydraulic oil or circulation oil lubricating system, which is installed with a sub plate.

The VB type valve with a sub plate is installed in a bypass circuit of the system. It is the most suitable for the system bypassing the full flow for a long time and/or using the valve constantly as the pressure control valve.

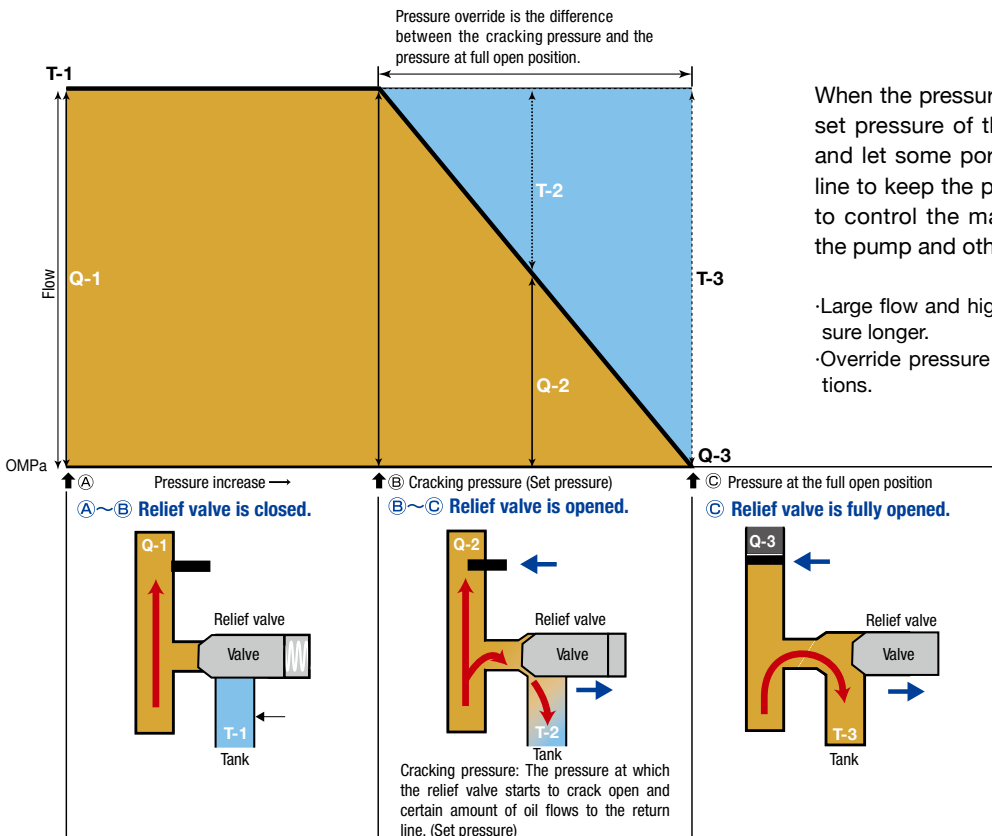
#### 2VD Type



This is the same as the system above except for using a valve attached to Trochoid Pump 2HB directly.

- Be sure to attach a plate to block the suction line when 2VD type is installed.
- Be sure to connect the return line to the oil tank.

## Operational description



Any disassembly or alteration of the product will void the warranty.